



MARIETTA MIDDLE

A FAMILY GUIDE TO
MIDDLE SCHOOL

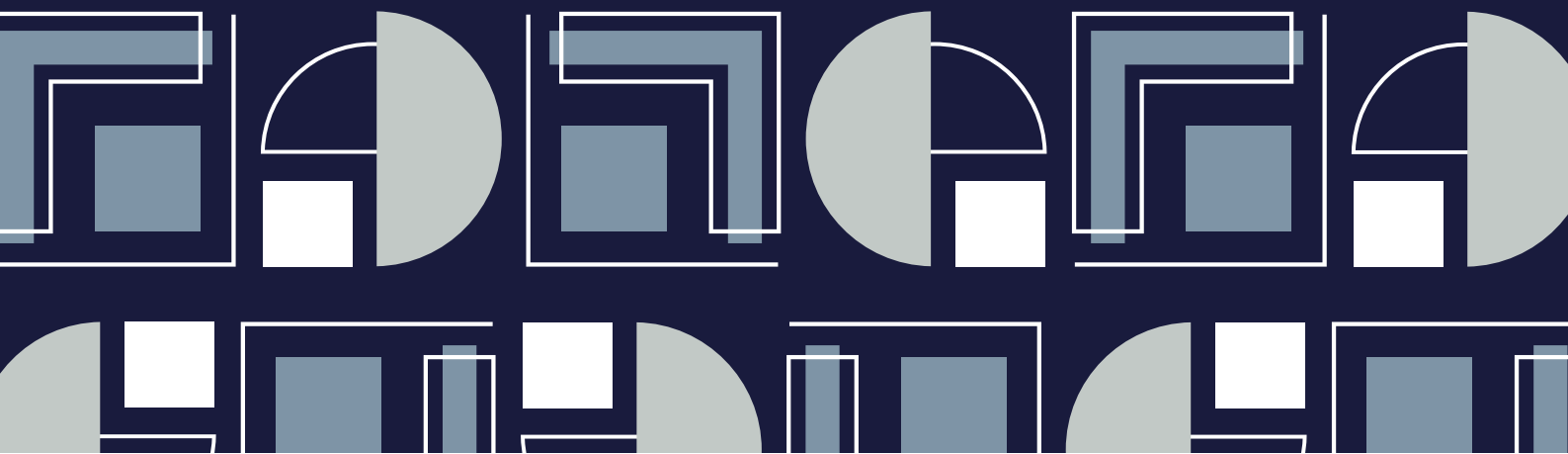




TABLE OF CONTENTS

Welcome Message	02
Vision, Mission, & Values	03
People to Know	04
Who to Contact	05
Bell Schedule	06
Uniforms	07
Cell Phone Use	08
Arrival and Dismissal	09
Dismissal Changes and Absences	10
Clinic, Medications, & Lunch	11
Grading Policy	12
PBIS and Discipline	13
Athletics	14
Websites and Chromebooks	15
Additional Technology Resources	16
Tips for the Middle School Parent	17
8th Grade Dues	18
Important Dates	19
Contact Info	20





WELCOME MESSAGE

DIONA BROWN PRINCIPAL

My name is Diona Brown, and I am very excited to serve as the MMS principal. Let me be the first to welcome you and your family to Marietta Middle School. We are so glad you have chosen to be a Blue Devil! As the principal, I am delighted to extend my warmest greetings to every one of you. We are excited to have your student at MMS, and I know they will have a wonderful experience.

My passion for education began as a child watching my mother and grandmother teach and impact students' lives. As 2014-2015 Teacher of the Year at Northwestern Middle School in Fulton County, I know what it means to strive for excellence and to do the hard work needed for positive results. During my years at Park Street, we increased student achievement and enjoyed immense academic success and growth. Based on the 2020-2021 MAP results, we were the only elementary school to grow in every grade and content area (grades 2-5) from Fall to Spring. We also created exciting opportunities for our students, including summer learning internships for our 5th graders and a Dual Language Immersion program in the fall. Furthermore, I was involved in designing and opening the new Park Street school building.

At Marietta Middle, we strive to create a learning environment where every student can engage in learning, discover new things, and excel academically and in life. We look forward to partnering and collaborating with you to ensure a successful school year. Our school is a place of learning, growth, and opportunity, and we aim to provide a nurturing and inclusive environment for all. I am committed to fostering a positive and supportive atmosphere where students can thrive academically, socially, and emotionally.

At MMS, we believe in the power of education to shape young minds and prepare them for a bright future. Our dedicated team of educators is passionate about imparting knowledge, encouraging critical thinking, and nurturing a love for learning in every student. We are committed to providing a well-rounded education that focuses on academic excellence and promotes character development, creativity, and community engagement.

As the principal, my door is always open to listen to your ideas, concerns, and suggestions. Together, let us build a strong and vibrant learning community where everyone feels valued, respected, and safe. I thank you for entrusting your child's middle school education and enrichment to the team of administrators and educators at Marietta Middle School.

Your MMS Principal,
Diona Brown, Ed.S.
dionabrown@marietta-city.org



VISION, MISSION, & VALUES,



MISSION

Engage- Discover- Excel

Our mission is to ensure every child at Marietta Middle School engages in learning, discovers new things, and excels academically and in life.



VISION

Our vision is to prepare all students for success in high school and beyond by fostering a caring, globally-minded culture that embraces diversity, emphasizes academic rigor, and ignites a passion for learning.



VALUES

- 1.Safety
- 2.Academic Excellence
- 3.Collaboration
- 4.Quality & Customer Service
- 5.Feedback & Growth
- 6.Support
- 7.Accountability





PEOPLE TO KNOW



DIONA BROWN
Principal

dionabrown@marietta-city.org



MARY THURMAN
Assistant Principal

mthurman@marietta-city.org



CELIS HARTLEY-LEWIS
Assistant Principal

chartley-lewis@marietta-city.org



ANTHONY BOOKER
Assistant Principal

abooker@marietta-city.org



HEATHER WELCH
School Improvement Administrator

hwelch@marietta-city.org



JULIE O'MEARA
Assistant Principal

jomeara@marietta-city.org



DR. VELISA CALDWELL
Assistant Administrator

vcaldwell@marietta-city.org



QIONNA SPENCER
School Nurse

qspencer@marietta-city.org



MARGARITA POCHE
7th Grade Counselor

mpoche@marietta-city.org



HELEN 'LIZZY' WINGATE
7th Grade Counselor

hwindgate@marietta-city.org



RICKI WHEELER
8th Grade Counselor

rwheeler@marietta-city.org



LANA HAFFNER
8th Grade Counselor

lracine-haffner@marietta-city.org



WHO TO CONTACT

If you have questions about...	Contact Name	Email Address
Absences/ Late Arrivals/ Early Pickup	Front Office	mms@marietta-city.org
Student Academic Progress or Conference	Teacher	(see teacher's email address on the website)
Class Schedule	Mary Thurman	mthurman@marietta-city.org
7th Grade Discipline	Anthony Booker	abooker@marietta-city.org
8th grade Discipline	Celis Hartley-Lewis	chartley-lewis@marietta-city.org
Health/ Medical Concerns or Questions	School Nurse	qspencer@marietta-city.org
Emotional Issues Affecting a Student (including family changes, stress, or depression)	Grade Level Counselor	(see the counselor's email on the website)
Special Education questions	Alana McLemore	amclemore@marietta-city.org
504 Plans/Accommodations	Christan Crear	ccrear@marietta-city.org
Concerns about possible testing and interventions	Marcia Brunett	mbrunett@marietta-city.org
State Testing or MAP Testing	Julie O'Meara	jomeara@marietta-city.org



BELL SCHEDULE

BELL SCHEDULE

Launch	7:15 - 7:40 am
1 st	7:45 - 8:30 am
2 nd	8:35 - 9:20 am
3 rd	9:25 - 10:10 am
4 th	10:15 - 11:00 am
5 th	11:05 - 11:50 am
6 th	11:55 - 12:40 pm
7 th	12:45 - 1:30 pm
8 th	1:35 - 2:30 pm

ENGAGE | DISCOVER | EXCEL



- Student building entry begins at 7:15 AM
- Students are tardy after 7:45 AM
- No student checkout or transportation changes after 1:00 PM
- Email absence and late excuse notes to mms@marietta-city.org





UNIFORMS



SHIRT OPTIONS:

- Shirts of any color but they must feature the Marietta logo or related team wording.
- MMS spirit wear shirts — Click [here](#) for other purchasing information and options.

OUTERWEAR/JACKETS/OTHER:

- Outerwear must be in solid black, grey, blue, or white or feature the Marietta logo or relevant text.
- Non-MMS solid/plain black, white, or gray jackets are allowed, but they must unzip to display the uniform shirt.
- Students may wear plain black/grey/blue/white visible undershirts.
- Hoods can't be worn on the head while in the building. Non-compliance is considered a dress code offense.
- Non-MMS coats may be worn to and from school during cold weather months but can't be worn during the school day (unless the requirements above are met) to maintain the unified dress code policy's integrity.

PANTS, SHORTS, & SKIRTS:

- Joggers, sweatpants, jeans (without rips, holes, or fringes), leggings, slacks, and knee-length shorts in solid tan, grey, blue, or black are acceptable. Pajama pants are not allowed.
- Skirts/skorts must be mid-thigh or longer (tennis skirts are prohibited).



SHOES:

- Shoes should be closed-toe and appropriate for a school environment.
- Flip flops, sandals without a back strap, heels above two inches, and slides are not permitted.
- Athletic shoes are recommended.

CONSEQUENCES:

- First Offense: Parent/Guardian is called to bring appropriate clothing/shoes to student or change of clothes will be provided to student
- Second Offense: Parent/Guardian is called to bring appropriate clothing/shoes to student or change of clothes will be provided to student - notification letter is sent
- Third Offense: Parent/Guardian is called to bring appropriate clothing/shoes to student or change of clothes will be provided to student. Lunch Detention provided and entered in Aspen as a minor referral conduct violation - ISS warning communication sent to parents/guardians.
- Fourth Offense: Parent/Guardian is called to bring appropriate clothing/shoes to student or change of clothes will be provided to student. Student placed in ISS with a major referral. *

- *Based on administrative discretion: When a parent/guardian is unavailable to bring student-appropriate clothing, the student may be placed in isolation for the remainder of the school day.
- Due to the complexities associated with dress codes, the administration has the right to address all dress code violations on a case-by-case basis and label other types of dress as inappropriate, even if not explicitly mentioned in this policy.



Parents seeking to "Opt-Out" of the unified student dress code may submit their request to the school principal by completing an ["Opt-Out" application](#) using the QR Code.



CELL PHONE USE



At MMS, we are proud to provide our students with a multitude of technological resources. Our classrooms are fully equipped with wireless laptops, printers, and interactive display boards, all of which are integral to our lessons. Students are expected to utilize these resources with the utmost responsibility and respect. Any misuse can result in loss of privileges.

Often, students are required to conduct online research for projects and class work. We have a firm policy at MMS that requires students to cite ALL sources for information obtained via the Internet. Plagiarism is a serious offense and can lead to disciplinary consequences, including a lowered grade.



Cell phones and smart devices:

- Students are not required to have these devices, but those who choose to bring such devices to school must keep them turned off and out of sight, only to be accessed with explicit adult permission.
- Parents and students are required to complete and sign the BYOT form every school year.

*Students are required to adhere to the MCS Acceptable Use Guidelines (Board Policy IFBG-E1) and the MMS BYOT Agreement.



ARRIVAL & DISMISSAL

ARRIVAL:

- 7th grade students who ride the bus must enter through the Auditorium entrance where they will have the option to pick up a breakfast.
- 8th grade students who ride the bus must enter through the main entrance where they will have the option to pick up a breakfast.
- Students who are car riders or walkers can pick up a breakfast in the 400 building.

WALKER PROCEDURES:

- All walkers must have a walker pass.
- Families should send a note or email to the front office to indicate that their student will be a walker.
- The front office staff will call the student from class to provide them with the walker pass.

DISMISSAL

- Dismissal will occur during a 5-minute block at the end of the day.
- The student body will be split into two groups:
- Students transitioning from the 400 building.
- Students transitioning from the main building.
- Bus riders walk to Winn or Polk St to board their buses.
- Car riders and walkers must use the Skywalk to walk toward the Big Blue Gym parking lot.

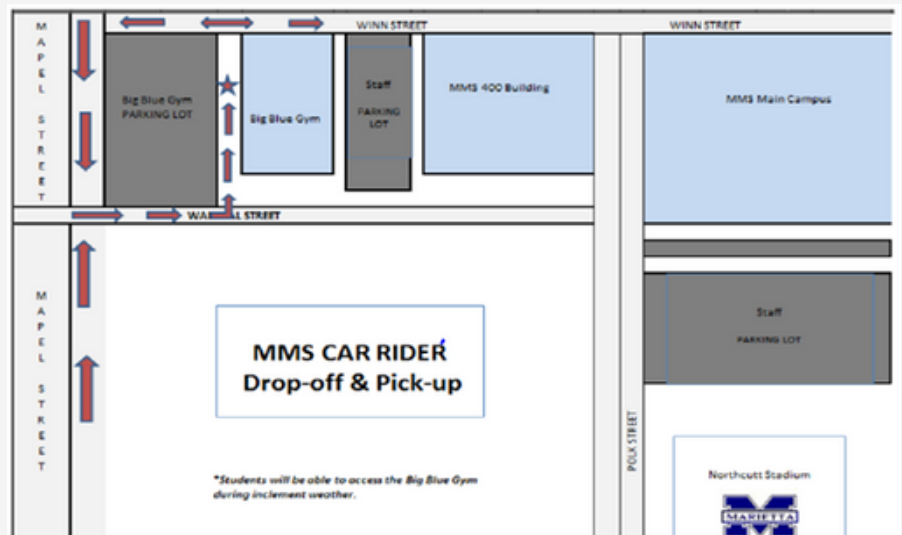
BUS INFORMATION

Information about buses including stop locations and times can be found using this QR Code.



CAR RIDER PROCEDURES:

- All car riders will enter the Big Blue Gym parking lot from Maple Ave. to access the Walthal St. entrance.
- Students may only use the Skywalk to cross Polk St.
- The school building opens at 7:15 a.m., and car riders may not be dropped off prior to that time.
- Car riders must be present in their 1st period class by 7:45 a.m., or they will be marked tardy for school.





CLINIC, MEDICATIONS, AND LUNCH

CLINIC DISMISSALS:

All student illnesses are dismissed from the school clinic by the school nurse.

MEDICATIONS:

- Medication authorization forms must be completed and signed by the student's parent or legal guardian for all medication given at school (prescription and over the counter).
- Over-the-counter medications can only be given for one (1) week without a doctor's authorization.
- All medication must be in the original container with the student's name on the container.
- Inhalers will be kept with the student unless there is a specific time it must be used at school, and then a parent note must authorize this. This is for short term only, and exact dates must be provided.



LUNCH

For the school year 2023-2024, Marietta City Schools is requesting all families to complete and submit an online Free and Reduced Meal Application any time during the school year if you believe your student(s) are eligible. Please use the QR Code.

Families that apply and are eligible could receive free or price-reduced breakfast (\$0.30) and lunch (\$0.40) during the school year, depending on the current federal eligibility guidelines.



STUDENT MEAL PRICING:

- **PRE-K AND ELEMENTARY SCHOOLS**
Breakfast: \$2.00 Lunch: \$3.00
- **6TH GRADE AND MMS**
Breakfast: \$2.00 Lunch: \$3.20
- **MARIETTA HIGH**
Breakfast: \$2.00 Lunch: \$3.20
- **REDUCED PRICES FOR ALL SCHOOLS**
Breakfast: \$0.30 Lunch: \$0.40



DISMISSAL CHANGES & ABSENCES

DISMISSAL CHANGES:

- **Advanced Dismissal Changes:** Prior knowledge of a dismissal change should be sent to school with the student in writing and delivered directly to the front office. Dismissal changes that are emailed directly to the teacher should be forwarded to the Attendance clerk at mms@marietta-city.org. No dismissal or transportation changes will be accepted after 1:00 pm.
- **Same Day Dismissal Change:** If a situation arises during the school day where you must make a dismissal change, you may do so before 1:00 PM in one of the following ways:
 - Email dismissal change to mms@marietta-city.org
 - A written notice may be left at the front office.
 - For the safety of our students, we cannot accept transportation changes made over the phone.

ABSENCES

A student receives an excused absence for a legitimate, documented reason. The lawful reasons for an excused absence are personal illness, illness or death in the family, religious holiday, court appointment, and quarantine or conditions rendering school attendance hazardous to health and safety.

On the first day back in school after an absence, the parent should send a written note to the front office giving the reason for the absence.

Please forward any emails or messages excusing absences to the front office at mms@marietta-city.org or send to the front in your attendance envelope/folder.




*****No student checkout or transportation changes after 1:00 PM



GRADING POLICY

GRADE SCALE:

Letter Grade	Numeric Grade
A	100 - 90
B	89 - 80
C	79 - 73 
D	72 - 70
F	69 and below

- Teachers follow grading guidelines established by the school, and the guidelines will be communicated through the syllabus for each course.
- Assignments that are submitted after the due date are considered late, and 10% may be deducted from late assignments.
- Assignments that are not submitted will receive an M for missing.
- Missing assignments will receive a grade of 50%.
- Students will have the opportunity to submit missing assignments within the dates below.

PROMOTION/RETENTION

7TH GRADE STUDENTS

- 7th Grade students must pass math, science, social studies, and ELA for the year. Passing is a 70 or above.
- If a student does not pass one or more of these courses, the student may be considered for retention.

8TH GRADE STUDENTS


- 8th Grade students must pass math, science, social studies, and ELA for the year. Passing is a 70 or above.

AND

- Earn a level II or higher on the Milestones Math EOG

AND

- Have a lexile score of 1010 or higher on the Milestones ELA EOG.
- If an 8th Grade does not meet all three requirements, the student may be considered for retention and/or summer school.

Report Period	Late work must be submitted by the following date.
Q1 Progress	8/21/2023
Q1 Report Card	10/2/2023
Q2 Progress	10/30/2023
Q2 Report Card	12/8/2023
Q3 Progress	1/22/2024 
Q3 Report Card	3/4/2024
Q4 Progress	3/29/2024
Q4 Term	5/13/24



PBIS AND DISCIPLINE

Positive Behavior Intervention Support (PBIS) promotes school safety and a positive learning environment. PBIS is implemented school-wide and designed to encourage positive behaviors in a consistent manner for all students. The staff of MMS explicitly teaches and models expectations to ensure our students can meet these expectations in every area of the school (hallways, restrooms, cafeteria, assemblies, arrival, dismissal, and in the classroom).

	PERSISTENCE	RESPECT	INTEGRITY	DETERMINATION	EMPATHY
HALLWAY/STAIRWELL	<ul style="list-style-type: none"> During class leave a pass Walk face forward Walk with purpose to your classes 	<ul style="list-style-type: none"> Keep hands and feet to self Be courteous Appropriate conversation level 	<ul style="list-style-type: none"> Follow directions Stay quiet - classes are in progress Follow the dress code 	<ul style="list-style-type: none"> Go directly to your destination Keep to the right Phones off and away 	<ul style="list-style-type: none"> Set a good example Keep hallways clear and clean Be accountable for your actions
RESTROOM	<ul style="list-style-type: none"> Throw trash in receptacle Enter and exit quietly 	<ul style="list-style-type: none"> Wait your turn Use equipment and supplies properly Use kind words and actions 	<ul style="list-style-type: none"> Report problems to an adult Wash hands 	<ul style="list-style-type: none"> Walk at all times Keep water in sink 	<ul style="list-style-type: none"> Go, flush, wash Use time wisely Request privacy
CLASSROOM	<ul style="list-style-type: none"> Raise your hand to speak Stay on task Stay engaged in the lesson 	<ul style="list-style-type: none"> Pay attention to your teacher Use kind words and actions Keep hands, feet, and objects to yourself 	<ul style="list-style-type: none"> Follow instructions Use classroom materials appropriately 	<ul style="list-style-type: none"> Be ready to learn Try your best Phones off and away 	<ul style="list-style-type: none"> Complete your work Organize belongings Participate
ARRIVAL/DISMISSAL	<ul style="list-style-type: none"> Take turns Watch for traffic when entering/exiting Listen for your stop 	<ul style="list-style-type: none"> Keep voices down Use kind words and actions Keep hands and feet to yourself 	<ul style="list-style-type: none"> Stay in designated area Report problems to an adult Keep track of your belongings 	<ul style="list-style-type: none"> Stay seated face forward Remember your bus number Walk to and from building Keep your backpack closed 	<ul style="list-style-type: none"> Listen to bus driver No eating or drinking
CAFETERIA	<ul style="list-style-type: none"> Use an indoor voice Raise your hand for help 	<ul style="list-style-type: none"> Respect the personal space of others Use kind words and actions 	<ul style="list-style-type: none"> Follow directions from adults Eat only your food 	<ul style="list-style-type: none"> Walk at all times Sit with feet under the table 	<ul style="list-style-type: none"> Leave a clean table, chair, and floor Put trash in receptacle
MEDIA CENTER	<ul style="list-style-type: none"> Stay on task Put things away in their proper place 	<ul style="list-style-type: none"> Respect others trying to read and learn 	<ul style="list-style-type: none"> Follow directions from adults Take care of books and equipment 	<ul style="list-style-type: none"> Walk at all times Return materials on time 	<ul style="list-style-type: none"> Be quiet Use time wisely
ASSEMBLY	<ul style="list-style-type: none"> Sit appropriately Be polite 	<ul style="list-style-type: none"> Keep hands and feet to yourself Eyes and ears on speaker 	<ul style="list-style-type: none"> Follow directions from adults Stay in designated area 	<ul style="list-style-type: none"> Stay with your class or group Enter and exit quietly 	<ul style="list-style-type: none"> Participate Use appropriate language

STUDENTS WHO DO NOT MEET BEHAVIOR EXPECTATIONS:

STUDENTS WHO MEET BEHAVIOR EXPECTATIONS:

- Receive positive praise from staff members.
- Will be eligible for Lunch on the Green. Lunch on the Green is once a month. Students who have no referrals for the period can attend the event. It occurs on the practice field, with special food items for purchase.
- Will be eligible for the 8th Grade Dance. This is a semi-formal dance that occurs in late April for 8th Grade students. 8th Grade students must be passing their classes and have no major referrals to participate.
- Will be eligible for the 8th Grade Walk. This walk occurs on the last day of school to symbolize the transition from middle school to high school.

PARENT MEETINGS

When students are suspended for multiple days, parents will be required to meet with administration before the student can return to school.

- **Conferences:** Conferences will be scheduled with parents, counselors, teachers and/or administrators to discuss issues and develop a plan to resolve the problem behaviors.
- **Mediation and Conflict Resolution:** These are discussions to resolve a dispute between two or more students.
- **Counseling:** Group or individual interventions run by counselors.
- **Mentoring:** A staff member is assigned to mentor a student, and they meet frequently to discuss a student's day and behavior.
- **Behavior Contract:** Student behavior expectations are outlined in writing, and students and parents are notified of the expectations.
- **Silent Lunch:** The student will be asked to sit in an area of the cafeteria and not speak while at lunch.
- **Time-out:** The student sits in another classroom rather than their assigned classroom for a period.
- **ISS:** (In-school suspension) The student attends school, but he/she reports to the ISS Room. Work is assigned to the student and credit is given for all work completed. Students cannot participate in extra-curricular activities for those days they are assigned to in-school suspension. Failure to comply with ISS rules may result in OSS (Out of School Suspension).
- **OSS:** (Out-of-school suspension) The student is suspended out-of school and is not permitted to attend school or any school sponsored functions. Students suspended ten days or less will have the opportunity to make up tests and other assignments for credit upon return from suspension. However, it will be the responsibility of the student to initiate make-up work. Parents are required by law to meet with administrators when a student returns to school after suspension.
- **Student Expulsion:** A student shall be subject to expulsion of a determined length by a decision of a disciplinary tribunal.



ATHLETICS



FALL SPORTS

- Volleyball
- Football
- Softball
- Cheer
- Cross Country

WINTER SPORTS

- Basketball
- Wrestling

SPRING SPORTS

- Soccer
- JV Baseball
- JV Lacrosse
- Tennis
- Track and Field



ELIGIBILITY:

- Coaches may create academic criteria for athletes to participate on their team.
- All students must have a current physical on file to participate in sports. Please go to the link below to complete the necessary paperwork:
 - mariettacity2.atsusers.com
 - Username: Student ID
 - Password: blue



WEBSITES AND CHROMEBOOKS

ASPEN

ASPEN is the digital platform for recording grades, attendance, and assessment scores. The website can be accessed using the following link:
<https://ga-marietta.myfollett.com>

TIPS

1. Check ASPEN frequently.
2. Charge chromebook nightly.
3. Check Schoology for important upcoming projects and tests.

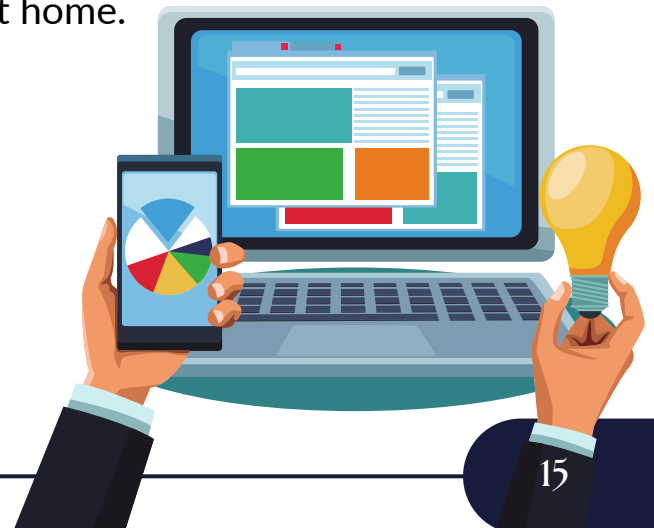
CHROMEBOOKS:

- All students are highly encouraged to use a Marietta City Schools-issued chromebook.
- Chromebooks will be distributed during the first two weeks of school.
- Students must bring their chromebook, case, and charger to school each day.
- An electronic technology agreement must be on file for every student.
- GoGuardian monitors all activity on Marietta City Schools-issued devices and while a student is logged into their Marietta City Schools account. GoGuardian sends alerts to administrators and counselors for activity that is not appropriate for school whether a student is on campus or at home.

SCHOOLGY

Schoology is the digital platform where teachers will communicate important information about assignments, tests, quizzes, and links for each of their classes.

<https://marietta.schoology.com/home>





ADDITIONAL TECHNOLOGY RESOURCES

E-HALLPASS

MMS will use a new technology resource to manage hall passes called E-hallpass.

BENEFITS

- Improve campus safety by knowing who is out of class and where they are going
- Maximize instructional time by reducing unnecessary hall pass usage and class interruptions
- Keep students accountable for their hall pass usage and reduce vandalism and mischief
- Better investigate incidents by knowing which students were out of class during a specific time period
- Know which students are out of class and where they are in emergency situations
- Simplifying record-keeping for teachers, front desk and administrators

SCHOOL STATUS

To improve home/school communication, we have invested in access to School Status. Many of you requested this resource and we are happy to provide it. As a reminder, proactive communication goes a long way in ensure academic success. Please click the video below to learn more. Stay tuned for training information.



For more information about School Status, please see the video at this QR Code.

Cell phone and social media can have a substantial impact on middle schoolers. Please see the website at this QR code for more information.





TIPS FOR THE MIDDLE SCHOOL PARENT

EXECUTIVE FUNCTIONING

Middle school students are still developing their executive functioning skills. Students still need parental guidance to help them successfully navigate middle school.

ORGANIZE:

- BACKPACKS
- FOLDERS
- HOMEWORK SPACE
- TIME

MONITOR:

- ASPEN - SET WEEKLY REMINDER
- SCHOOLOGY
- PEER INTERACTIONS
- SOCIAL MEDIA
- GAMING
- BED TIMES

PREPARE:

- CHARGE CHROMEBOOKS NIGHTLY.
- SCHOOL SUPPLIES
- STUDY FOR TESTS AND QUIZZES.

COACH:

- RELATIONSHIPS WITH PEERS
- GOAL SETTING
- PERSEVERANCE
- CELEBRATE SUCCESS.



8TH GRADE DUES

<p>Yearbook</p> <p>\$40</p>	<p>8th Grade Dance</p> <p>\$15</p>	<p>Savannah College Trip</p> <p>\$350</p>	<p>8th Grade Walk</p> <p>\$20</p>
<p>Treasure the year by purchasing the MMS Yearbook.</p>	<p>Every 8th grade student qualifies to attend.</p>	<p>Includes transportation, hotel, and meals. Attendance is merit based.</p>	<p>Includes swag bag, T-shirt, bottled water, and treats.</p>
<p>PAY HERE</p>			





IMPORTANT DATES

August:

1st Day of School - August 2nd
Open House - August 24th
Parent University - August 25th

January:

Students Return - January 4th
Rising 7th Grader Night - January 18th
Beginning Band Concert - Week of January 22nd
MAP Growth Celebration - January 26th

September:

Labor Day - September 4th
Fall Break - September 25th - 29th

February:

Parent University - February 9th
Beginning Orchestra Concert - February 13th

October:

Picture Day - October 11th
7th Grade Band Concert - Week of October 17th
Conference Week - October 23rd - 27th
Fall Festival - October 27th

March:

Band Pre-LGPE Concert - Week of March 4th
High School Musical Performances - Week of March 11th
Blue Devil Showcase - March 21st

November:

Fall Orchestra Concert - Week of November 6th
Picture Retake Day - November 16th
Thanksgiving Break - November 20th - 24th

April:

Spring Break - April 1st - 5th
8th Grade Dance - April 19th
MAP Growth Celebration - April 26th
Anastasia Show - April 27th

December:

Winter Band Concert - Week of December 4th
Holiday Chorus Concert - Week of December 11th
Winter Break - December 20th - January 3rd

May:

Screen on the Green - May 3rd
Spring Chorus Concert - Week of May 6th
8th Grade Honors Night - May 14th
7th Grade Honors Night - May 15th
8th Grade Overnight Field Trip - May 16th - 17th
8th Grade Walk - May 22nd
Last Day of School - May 23rd



THANK YOU



Phone
770-422-0311



Email
mms@marietta-city.org



Website
www.marietta-city.org/mms

121 Winn St. Marietta, Ga. 30064